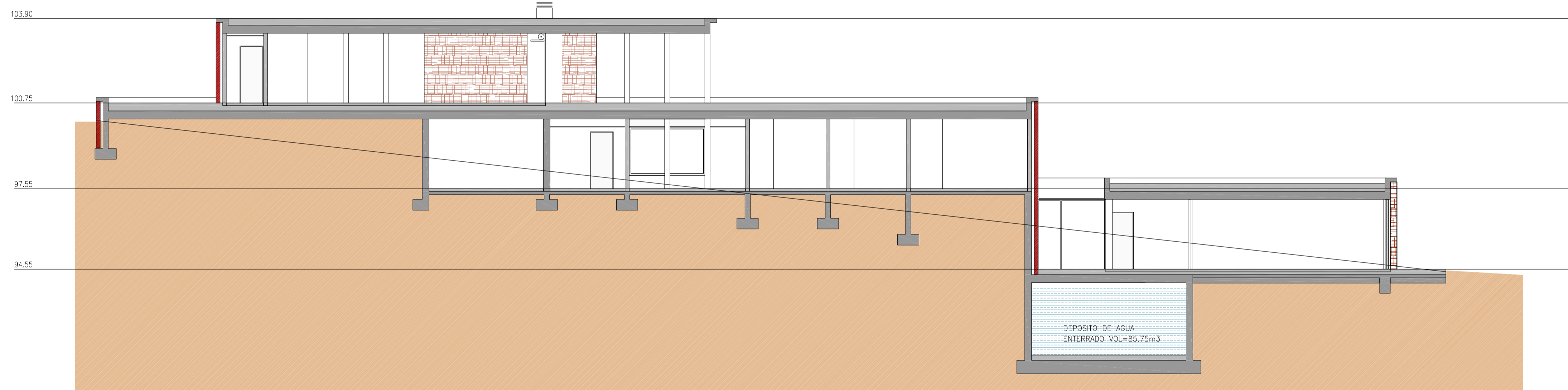
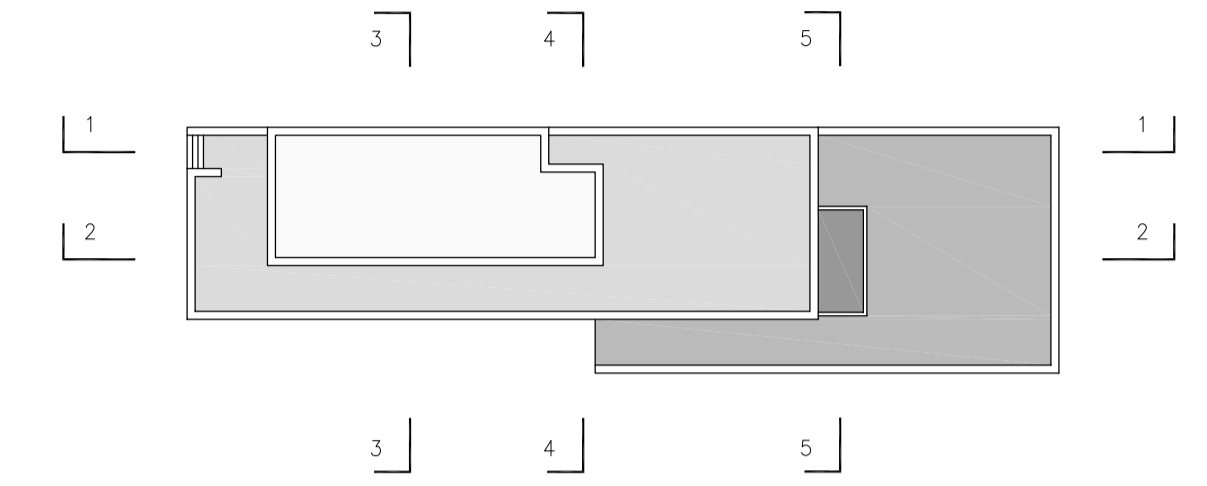
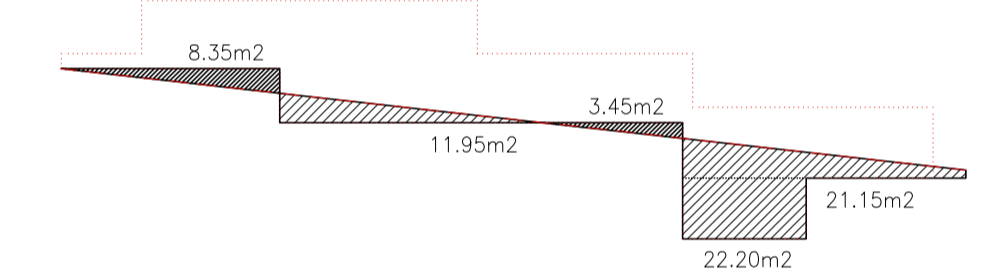
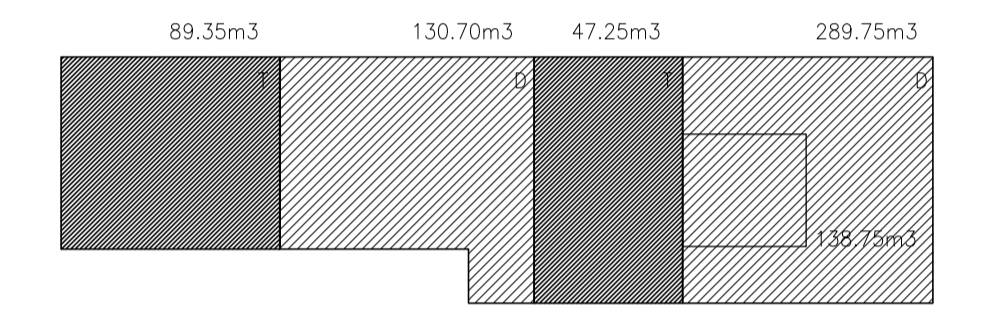


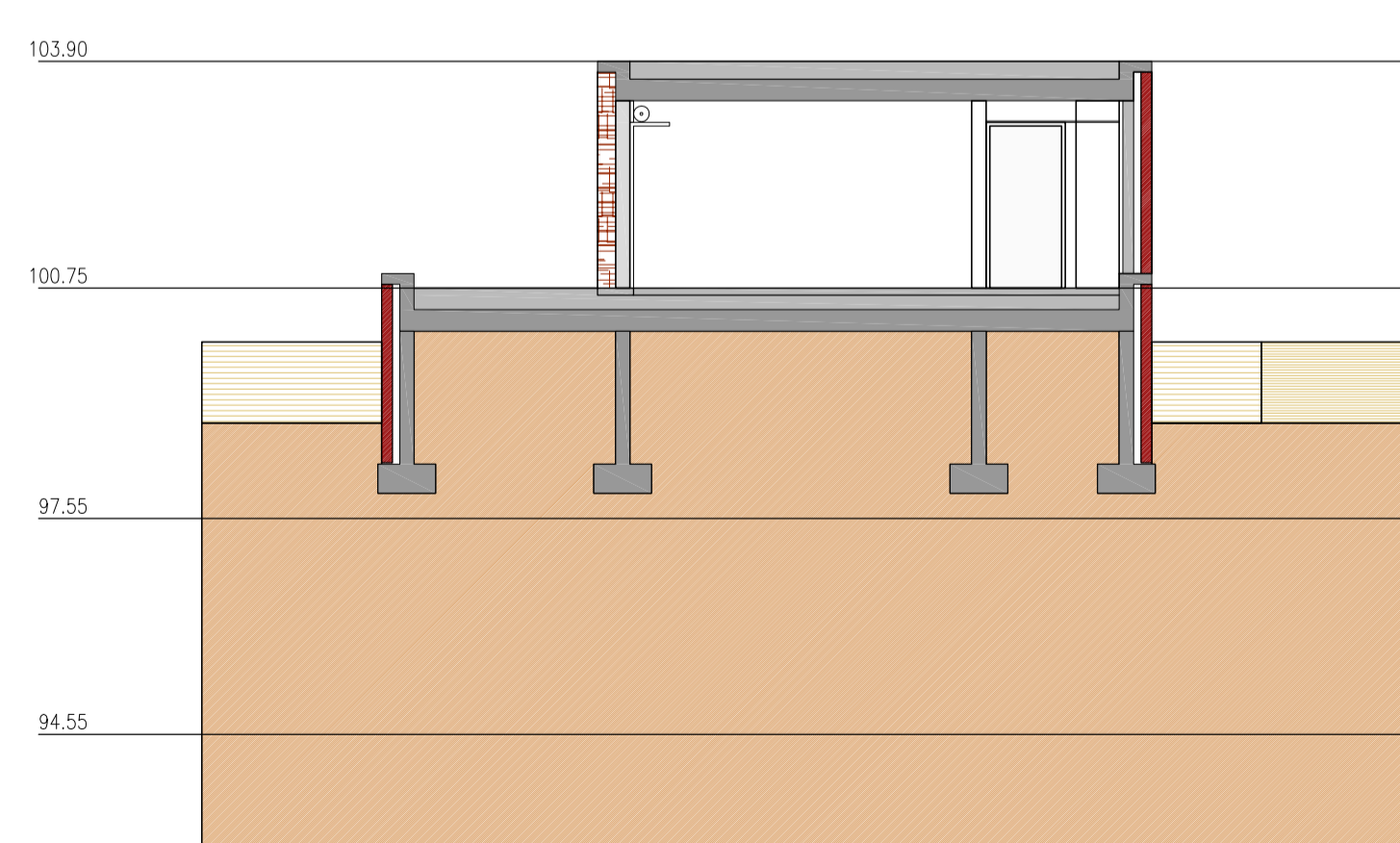
SECCION 1



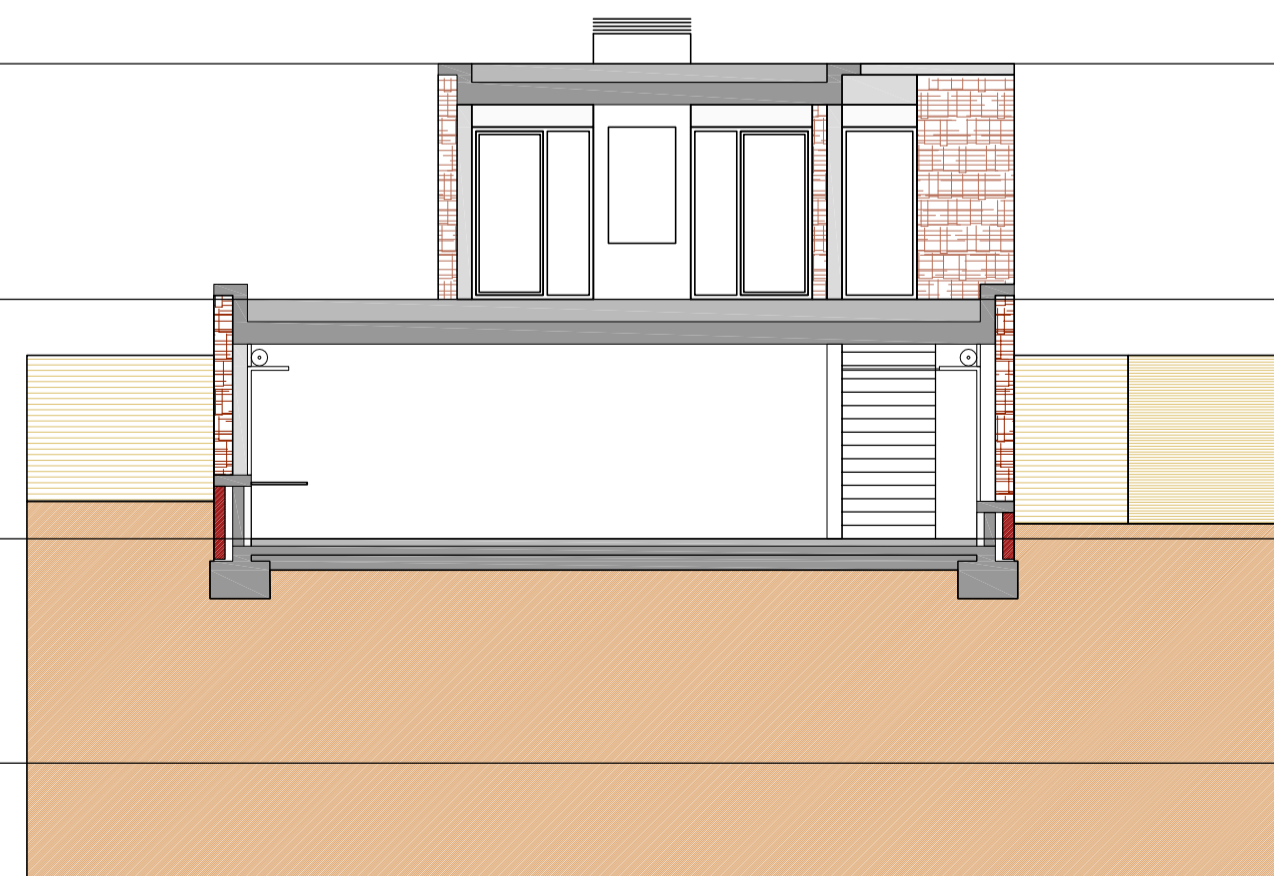
SECCION 2



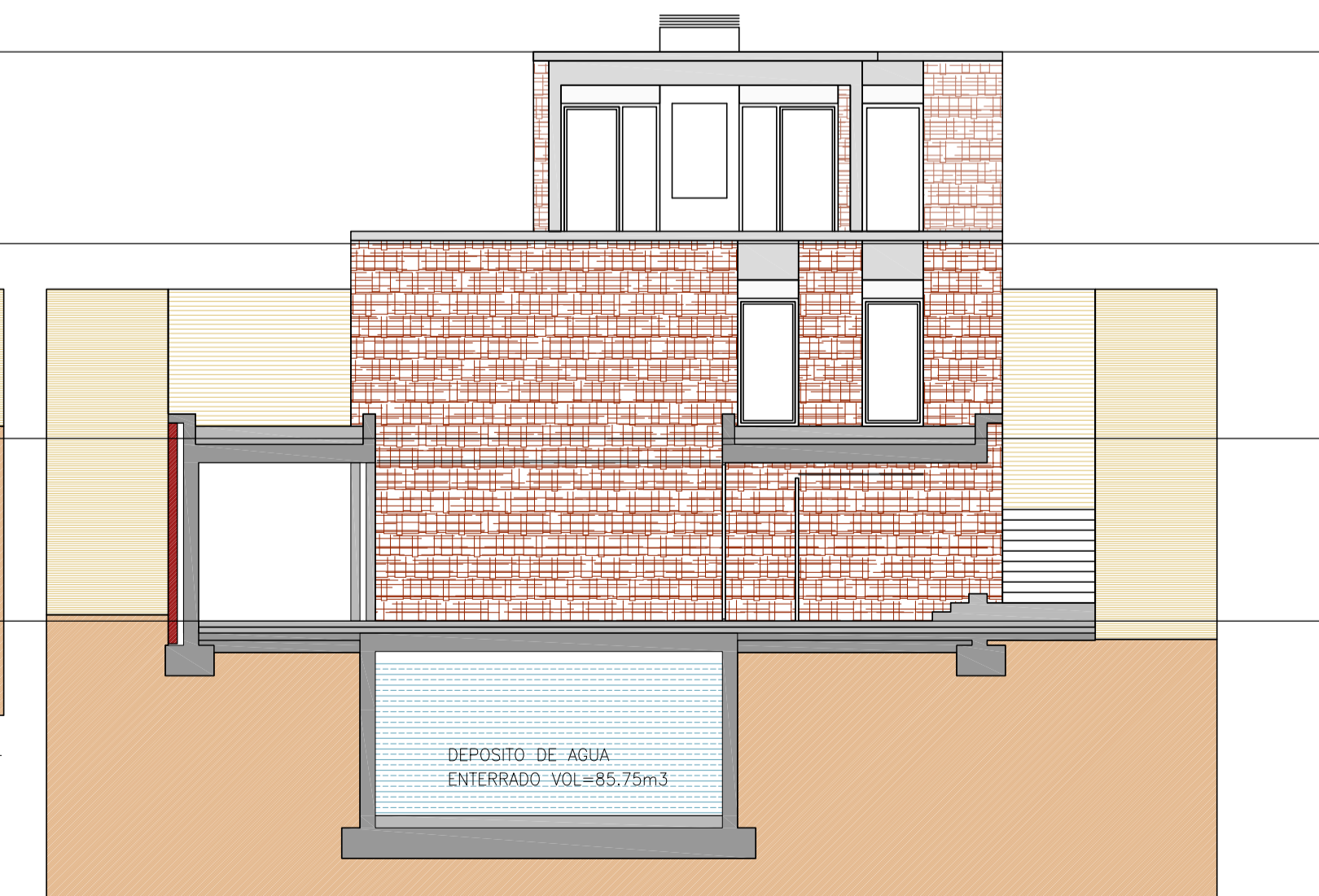
TOTAL DESMONTE Y VACIADO = 559.20m3  
 TOTAL TERRAPLEN = 136.60m3



SECCION 3



SECCION 4



SECCION 5

PLANO NO DEFINITIVO  
 PROYECTO EJECUCION

PROYECTO  
 VIVIENDA UNIFAMILIAR EN  
 NAVATRASIERRA (CACERES)

PLANO  
 SECCIONES 1-2  
 SECCIONES 3-4-5

ARQUITECTOS

ROBERTO ERCILLA	M. ANGEL CAMPO
No. PROYECTO	FECHA
0202	OCTUBRE-2002

ESCALA	No. PLANO
1/100	A06